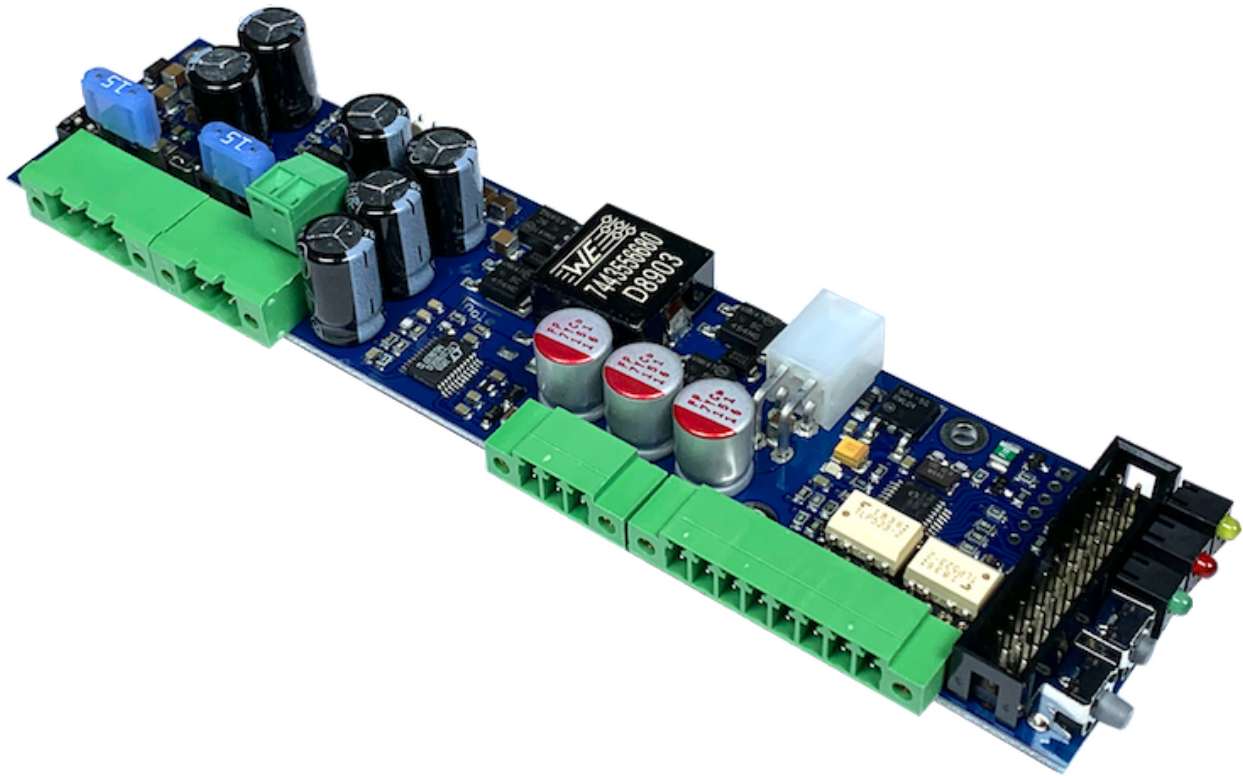


# UPS 120



## Features

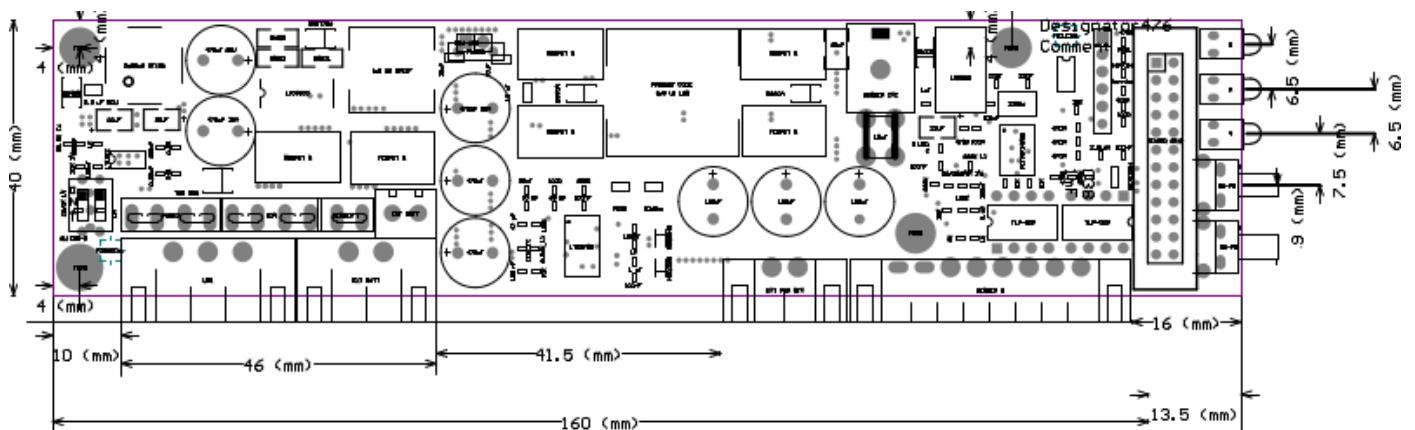
- 12V DC Output (120W)
- 9-24V DC Input
- SLA batteries compatible
- Charges 12V SLA batteries with only 12V input DC on the main power line
- 2 opto-isolated input + 2 opto-isolated output (controlled by USB)
- Front Panel I/O interface

Specifications are subject to change without notice.

## Technical specifications

Part Number	SP02010003
<b>DC INPUT</b>	
Minimum input operating voltage	9V (Electronic shutdown at 8.5V)
Maximum input operating voltage	24V (Electronic shutdown at 30V )
Input current limit (fuse protected)	15A
<b>BATTERY INPUT</b>	
Minimum input operating voltage	9V
Maximum input operating voltage	18V
Battery current limit (fuse protected)	15A
<b>BATTERY CHARGER</b>	
Battery charger type	SEPIC constant current / constant voltage / trickle
Bulk charge	600mA at any valid DC INPUT
Battery type	12V SLA
<b>12V DC OUTPUT</b>	
Max output power	120W
Regulated output voltage	12V (+/- 1%)
<b>DIGITAL I/O</b>	
Digital input (opto-isolated)	5-16V DC – 20mA max
Digital transistor output (opto-isolated)	30V DC max – 500mA max
Ignition input	5-60V DC – 0.1 mA max
<b>MECHANICAL</b>	
Dimensions	173.5mm x 40mm x 22mm
Weight	90 grams
<b>ENVIRONMENT</b>	
Operating temperature	0°C – +60°C
Storage temperature	-55°C – +85°C
Relative Humidity	5% – 90% non condensing

## Mechanical drawing



Specifications are subject to change without notice.