

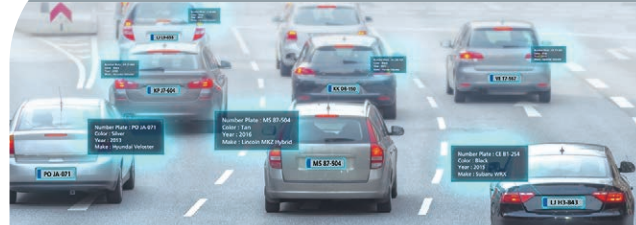
# ECX-1400/1300 RTX2070

Workstation-grade Intel® Xeon®/Core™ i7/i5/i3 (Coffee Lake)  
AI Computing System with NVIDIA® GeForce RTX™ 2070



- 6 Cores 8th Generation Intel® Xeon®/Core™ i7/i5/i3 (Coffee Lake-S) with workstation-grade Intel® C246 Chipset
- 2 DDR4 2666MHz Memory, up to 64GB (ECC/Non-ECC)
- Powered by advanced NVIDIA Turing™ GPU architecture and all-new RTX platform, NVIDIA® GeForce RTX™ series graphic engine supports up to 6X the performance of previous generation graphics cards for real-time AI computing
- Display : 1 VGA, 1 HDMI, 2 DVI & 4 DisplayPort interfaces, up to 7 independent HD displays
- Multiple external USB 3.1 Gen 2 supports up to 10Gbps data transfer
- 6 Independent GigE LAN with 4 IEEE 802.3at PoE+
- 32 Isolated DIO, 6 USB 3.1, 4 COM RS-232/422/485
- Storage : 4 2.5" SSD Tray, 1 CFAST, 1 M.2, 4 SATA III
- Expansion : 2 Mini PCIe/mSATA, 1 M.2
- 3 External SIM Socket for WiFi/4G/3G/LTE/GPRS/UMTS
- 24V to 36V DC Power Input with 80V Surge Protection
- Configurable Ignition Power Control

Automatic LPR



Autonomous Vehicles



Robotic Control



Public Surveillance



# Specifications

## System

Processor	6 Cores Intel® Xeon®/Core™ i7/i5/i3 Processor (Coffee Lake-S)
Chipset	Intel® C246
BIOS	AMI
SIO	IT8786E
Memory	2 DDR4 2666MHz SO-DIMM, up to 64GB (ECC/Non-ECC)
OS	Windows 10, Linux

## I/O Interface

Serial	4 COM RS-232/422/485 (ESD 8KV)
USB	- 6 USB 3.1 (External) - 1 USB 2.0 (Internal)
Isolated DIO	<b>ECX-1400 Series</b> : 32 Isolated DIO : 16 DI, 16 DO <b>ECX-1300 Series</b> : 16 GPIO
LED	Power, HDD, PoE, Wireless
SIM Card	3 External SIM Card Socket

## Expansion

Mini PCIe	2 Full-size for PCIe/USB/External SIM Card/mSATA
M.2	1 M.2 Key E Socket

## Graphics

Graphics Processor	- Intel® UHD Graphics P630/630 - NVIDIA® GeForce RTX™ 2070
Interface	- 1 VGA : Up to 1920 x 1200 @60Hz - 1 HDMI : Up to 4096 x 2304 @60Hz - 2 DVI : Up to 1920 x 1200 @60Hz - 2 DisplayPort : Up to 7680 x 3840 @60Hz - 2 DisplayPort : Up to 4096 x 2304 @60Hz

## Storage

SATA	4 SATA III (6Gbps) support S/W RAID 0, 1, 5, 10
mSATA	2 SATA III (Mini PCIe Type, 6Gbps)
M.2	1 M.2 Key B Socket
Storage Device	- 1 Cfast Socket, Push-in/Push-out Ejector - 4 Front-access 2.5" SSD/HDD Tray

## Audio

Audio Codec	Realtek ALC892, 5.1 Channel HD Audio
Audio Interface	1 Mic-in, 1 Line-out

## Ethernet

LAN 1	Intel® I219LM GigE LAN supports iAMT 12.0
LAN 2	Intel® I210 GigE LAN

## PoE (ECX-1400)

LAN 3 to LAN 6	GigE IEEE 802.3at (25.5W/48V) PoE+ by Intel® I350
----------------	---

## Power

Power Input	24V to 36V, DC-in
Power Interface	3-pin Terminal Block : V+, V-, Frame Ground
Ignition Control	16 Mode (Internal)
Remote Switch	3-pin Terminal Block
Surge Protection	Up to 80V/1ms Transient Power

## Others

TPM	Optional Infineon SLB9665 supports TPM 2.0, LPC Interface
Watchdog Timer	Reset : 1 to 255 sec./min. per step
Smart Mgmt.	Wake on LAN, PXE supported
HW Monitor	Monitoring temperature, voltages. Auto throttling control when CPU overheats.

## Mechanical

Dimensions	260mm x 215mm x 104.1mm (10.24" x 8.46" x 4.10")
Weight	6.1 kg (13.43lb)
Mounting	- Wallmount by mounting bracket - DIN Rail Mount (Optional)

## Environment

Operating Temp.	-20°C to 45°C (-4°F to 113°F)
Storage Temp.	-40°C to 85°C (-40°F to 185°F)
Humidity	5% to 95% Humidity, non-condensing
Relative Humidity	95% @ 45°C
Shock/Vibration	- IEC 61373 : 2010 - Railway Applications : Rolling Stock Equipment, Shock and Vibration Tests
EMC	CE, FCC, EN50155, EN50121-3-2

\* The rights of all brand names, product names and trademarks belong to their respective owners.  
Copyright © 2019 Vecow Co., Ltd. All rights reserved.

# Order Information

Model Name	GigE LAN	PoE+	SSD Tray	USB 3.1	COM	SIM	Isolated DIO	GPIO
ECX-1400 RTX2070	6	4	4	6	4	3	32	-
ECX-1300 RTX2070	2	-					-	16

\* RTX 2060 is available by request.

## CPU List

Series	CPU	Cache (MB)	Turbo Freq. (GHz)	TDP (W)	ECC Memory
Intel® Xeon®	E-2176G	12	4.6	80	Yes
	E-2124G	8	4.5	71	
Intel® Core™	i7-8700	12	4.6	65	NA
	i7-8700T	12	4.0	35	
	i5-8500	9	4.1	65	NA
	i5-8500T	9	3.5	35	
	i3-8100	6	3.6	65	
	i3-8100T	6	3.1	35	Yes

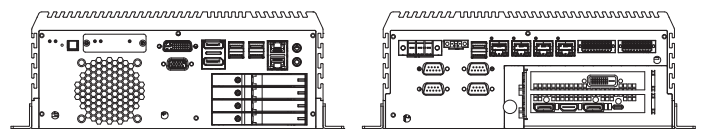
## Accessories

DDR4 32G	Certified DDR4 32GB 2666MHz RAM
DDR4 16G	Certified DDR4 16GB 2666/2400/2133MHz RAM
DDR4 8G	Certified DDR4 8GB 2666/2400/2133MHz RAM
DDR4 4G	Certified DDR4 4GB 2666/2400/2133MHz RAM
PWA-280WB-VT	280W, 24V, 85V AC to 264V AC Power Adaptor with 3-pin Terminal Block (7.62mm pitch), Wide Temperature -30°C to +70°C
PWS-360W	360W, 28.8V, 90 to 132V AC/180 to 264V AC (selected by switch) Power Supply
PWS-480W-VT	480W, 24V, 90V AC to 305V AC Power Supply, Wide-Temp, IP65
VESA Mount	VESA Mounting Kit
DIN-RAIL Kit	DIN Rail and VESA Mounting Kit
TMK2-20P-100	Terminal Block 20-pin to Terminal Block 20-pin Cable, 100cm
TMK2-20P-500	Terminal Block 20-pin to Terminal Block 20-pin Cable, 500cm
TMB-TMBK-20P	Terminal Board with One 20-pin Terminal Block Connector and DIN-Rail Mounting
4G Module	Mini PCIe 4G/GPS Module with Antenna
WiFi & Bluetooth	WiFi & Bluetooth Module with Antenna

# Dimensions & Drawing

Unit : mm (inch)

## ECX-1400 RTX2070



## ECX-1300 RTX2070

