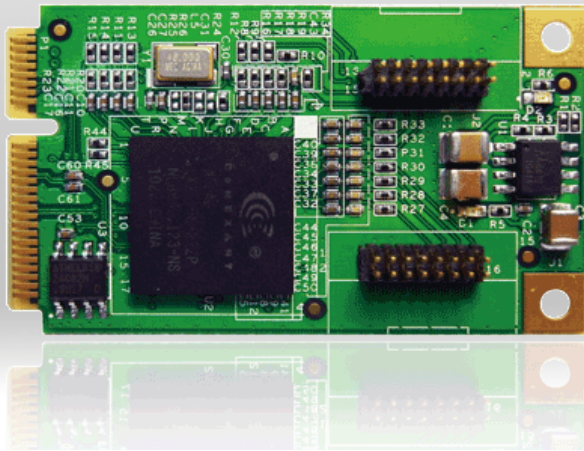


VMX-200

4-CH/8-CH, D1, Real-time, Mini-PCI Express, Video Capture/Software Compression card



Overview ▶

The Vecow VMX-200 multi-channel high quality video/audio card is especially designed for surveillance applications. Integrated with mini PCIe interface, VMX-200 series provides outstanding digital to video transferring rate, intensive integration with wide-ranging systems, and flexibility for Build-to-Order. Containing eight high quality NTSC/PAL video decoders with 10-bit A/Ds and 5-line comb filtering, VMX-200 series produces high definition digital Video output. Digital Video/Audio output supports the bridging of up to four channels of digital video and audio from PCIe. In addition, low power consumption and low heat design of VMX-200 series can save more system power and use most PC system resources. The complete SDK supports and mini PCIe form factor, the Vecow VMX-200 series can be easily integrated into various machine, such like as BOX Computer, Mounted PC, Panel PC, POS/ATM system or Embedded board.

Key Features ▶

- ◆ 120/240 in real-time D1 resolution
- ◆ 4-CH/8-CH video/audio input
- ◆ High-quality 10-bit A/Ds for video decoders
- ◆ Programmable motion detection
- ◆ D1 & CIF resolution supported
- ◆ Support GPIO pins
- ◆ Interface to Maxim H.264 CODECs for bridging of compressed data to PCIe

Specification

	VMX-200-4	VMX-200-8
General		
Bus Type/Form Factor	Mini PCI Express	Mini PCI Express
Dimensions	51(L)mm x 30(H)mm	51(L)mm x 30(H)mm
I/O Connector	1 x 16 pin header to D-Sub 15 cable 1 x D-Sub 15 to BNC cable	2 x 16 pin header to D-Sub 15 cable 2 x D-Sub 15 to BNC cable
Environment Certifications	FCC, CE, RoHS compliance	FCC, CE, RoHS compliance
Storage Temperature	-40°C to 85°C	-40°C to 85°C
Operate Temperature	0°C to 60°C	0°C to 60°C
Video		
Maximun Channel Number	4	8
Input Connector	4 input BNC to D-Sub 15	2 x 4 input BNC to D-Sub 15
Resolution	D1 (NTSC:720x480 / PAL:720x576) CIF (NTSC:360x240 / PAL:360x288) 4CIF (NTSC:704x480 / PAL:704x576) DCIF (NTSC:528x320 / PAL:528x384) QCIF (NTSC:180x120 / PAL:180x144)	D1 (NTSC:720x480 / PAL:720x576) CIF (NTSC:360x240 / PAL:360x288) 4CIF (NTSC:704x480 / PAL:704x576) DCIF (NTSC:528x320 / PAL:528x384) QCIF (NTSC:180x120 / PAL:180x144)
Recording Rate	4CH with full D1 resolution 120 fps on NTSC system, 100 fps on PAL system	8CH with full D1 resolution 240 fps on NTSC system, 200 fps on PAL system
Audio		
Maximun Channel Number	4 mono or 2 stereo	8 mono or 4 stereo
Input Connector	4 input RCA to D-Sub 15	2 x 4 input RCA to D-Sub 15
Software		
OS Support	WindowsXP/VISTA/Windows7 (32 Bits or 64 Bits) Standard Linux kernel 2.6.32 and all above	WindowsXP/VISTA/Windows7 (32 Bits or 64 Bits) Standard Linux kernel 2.6.32 and all above
SDK	VC++ / .NET	VC++ / .NET
Recommend System		
CPU	Intel Core2 Duo E4500 2.2GHz	Intel Core2 Quad Q8400 2.66GHz
Memory	1GB	1GB
Graphics Unit	DirectX 9.0c compatible display card	DirectX 9.0c compatible display card
Storage Size	500GB	750GB

*The specification is subject to change without prior notice.

Ordering Information

Part Number	Description
VMX-200-4	4-CH, D1, Real-time, Mini-PCI Express, 120 fps, Video Capture Card, include cables and SDK
VMX-200-8	8-CH, D1, Real-time, Mini-PCI Express, 240 fps, Video Capture Card, include cables and SDK
Suggested Platform	Description
EC-3000-5G	Intel® Core™ i7/i5 Fanless Embedded Controller with 5x GbE, 2x eSATA, 4x COM
EC-3000-3G	Intel® Core™ i7/i5 Fanless Embedded Controller with 3x GbE, 2x eSATA, 4x COM