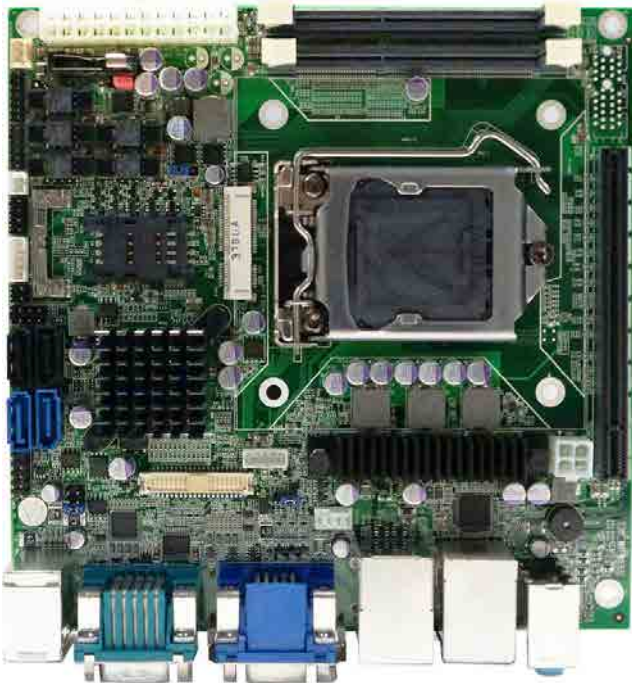


MB-8302 NEW

Mini-ITX support Intel® 4th Gen Intel® Core™ LGA 1150 processor Intel® H81 Express chipset, 2 x DDR3 1600 MHz / SODIMM up to 16GB 2 x Intel® Giga LAN, 4 x SATA HDMI / VGA / DVI-D / 24-bit LVDS, 6 x COM, 8 x USB, LPC, SMBus 1 x PCI-Express X16 / X1 slot, 1 x Mini-PCIe socket



Features

- Mini-ITX motherboard
- Intel 4th generation Intel® Core™ LGA 1150 Socket
- H3 QC/DC processor
- Intel® H81 Express chipset
- 2 x DDR3 1600 MHz / SODIMM up to 16GB
- 1 x external HDMI/VGA/DVI-D/24-bit Dual Channel LVDS
- 6 x COM, 8 x USB, LPC, SMBus
- 2 x SATA 6Gb/s 2x SATA 3Gb/s
- 2 x Intel® Giga LAN
- 1 x PCI-Express X16 slot , 1 x PCI-Express X1 slot
- SIM socket support



System

Form Factor	Mini-ITX motherboard
CPU	Intel® Haswell LGA 1150 Socket H3 QC/DC processor
Chipset	Intel® H81 Express chipset
Memory	2 x DDR3 1600 MHz / SODIMM up to 16GB, w/o ECC support
BIOS	AMI SPI BIOS
SSD	Support SATA SSD
Watchdog timer	255 levels, 1 ~ 255 sec
Expansion	1 x PCI-Express X16 slot , 1 x PCI-Express X1 slot 1 x Full-size Mini-PCIe With PCIe X1, USB signal . SIM socket support
Board Size	170mm x 170mm
Operating Temp.	0°C~60°C (32°F~140°F)
Storage Temp.	-20°C~80°C (-4°F~176°F)
Operating Hum.	10%~90% (non-condensing)

Display

Chipset	Intel® integrated
Display Interface	1 x external HDMI 1.3a 1 x external VGA 1 x external DVI-D 1 x internal 24-bit Dual Channel LVDS

I/O

Serial Port	Internal : 1 x RS232/422/485 (COM2), 4 x RS232 (pitch : 2.0) External : 1 x RS232(DB9)
SATA	2x SATA 6Gb/s 2x SATA 3Gb/s
USB	External : 2 x USB3.0 + 4 x USB2.0 Internal : 2 x USB2.0 (Pitch=2.54mm)
Ethernet	External : 1 x Intel I211AT, 1 x Intel I217LM Gigabit ethernet
Audio	External : Line-in/out , Mic-in
Digital I/O	8-bit GPIO interface (pitch : 2.0)
LPC	1 x LPC header for Optional TPM module
Others	2 x cooling Fan header (Smart fan support) , 1 x PS/2 keyboard/Mouse 1 x Front Panel header for power on/off, reset, HDD / power LED indicator 1 x LVDS Backlight/inverter pin-header (w/ house)

Power

Power in	Standard 24-pin + 4-pin ATX power supply
-----------------	--

Packing

MB-8302	Default
IO plate	TBD
SATA cable	46L-SATA11-00, w/ 200mm length
COM port cable	optional . 46L-ICOM34-00, DB9 COM w/ 180 mm length
USB cable	optional . 46L-IUSB03-00, Dual USB w/ 245mm length

* Note All specifications are subject to change without prior notice