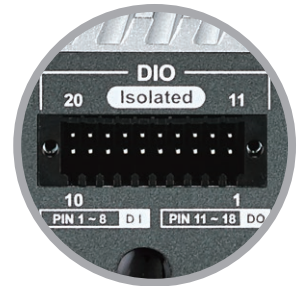
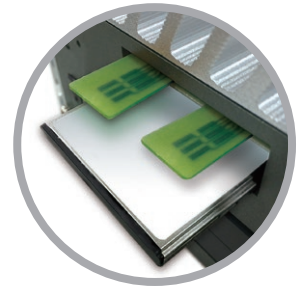
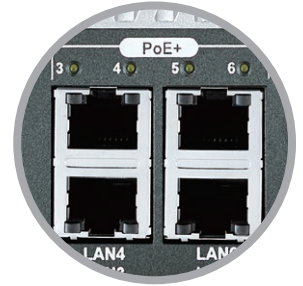
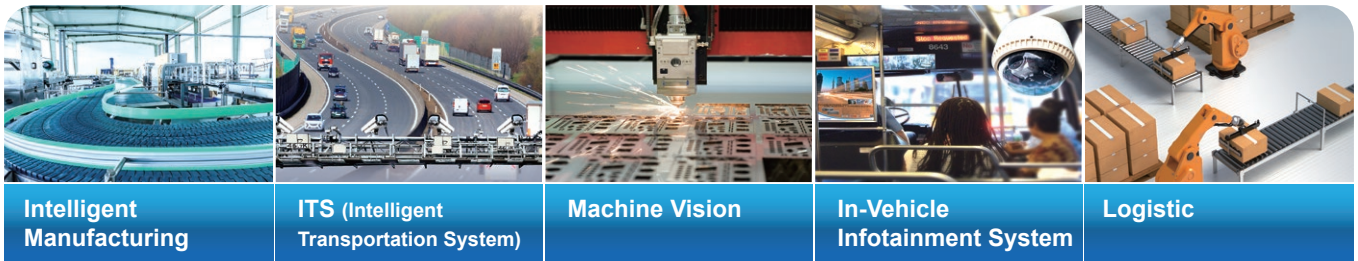


ECS-4000 Series

Intel® Core™ i7/ i5/ i3 Processor (Broadwell-U) Fanless Embedded System, 6 Gigabit LAN with 4 IEEE 802.3at PoE+, 2 Front-access SSD/HDD Tray, 2 External SIM Socket, 1 CFast Socket, 16 Isolated DIO, High Performance, Slim, Rugged, Extended Temperature

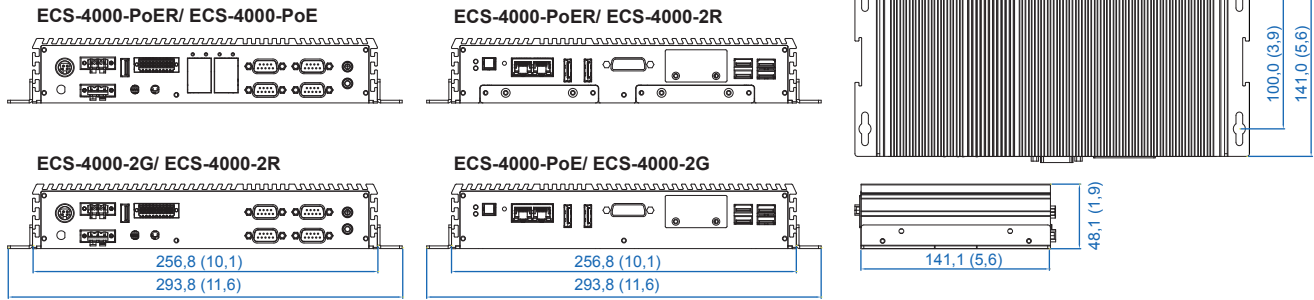


- 5th Generation Intel® SoC (Broadwell-U)
- Supports 4K Resolution, up to 3 independent displays
- 6 Gigabit LAN with 4 IEEE 802.3at PoE+
- Fanless, -25°C to 70°C Operating Temperature
- 16 Isolated DIO (8 DI, 8 DO)
- 2 Mini PCIe for 3G/ 4G/ LTE/ WiFi/ GPRS/ UMTS
- 2 External SIM Card Socket
- 2 Front-access SSD/ HDD Tray
- 6V to 36V DC-in, 80V Surge Protection
- Configurable Ignition Power Control



Dimensions & Drawing

Unit: mm (inch)



Specifications

System		PoE	
Processor	Intel® Core™ i7/ i5/ i3 Processor (Broadwell-U)	LAN 3	Gigabit IEEE 802.3at (25.5W/48V) PoE+ by Intel® I210
BIOS	AMI	LAN 4	Gigabit IEEE 802.3at (25.5W/48V) PoE+ by Intel® I210
SIO	IT8786E	LAN 5	Gigabit IEEE 802.3at (25.5W/48V) PoE+ by Intel® I210
Memory	2 DDR3L 1333/ 1600 MHz SO-DIMMs, up to 16GB	LAN 6	Gigabit IEEE 802.3at (25.5W/48V) PoE+ by Intel® I210
OS	Windows 8, Windows 7, Linux		
I/O Interface		Power	
Serial	4 COM RS-232/ 422/ 485	Input Voltage	6V to 36V, DC-in
USB	• 2 USB 3.0 • 4 USB 2.0 (3 External, 1 Internal)	Power Input	• 3-pin Terminal Block : V+, V-, Frame Ground • Mini-DIN 4-pin
Isolated DIO	16 Isolated DIO : 8 DI, 8 DO (ECS-4000-PoER, ECS-4000-PoE)	Ignition Control	16 Mode (Internal)
DIO	16 DIO : 8 DI, 8 DO (ECS-4000-2G, ECS-4000-2R)	Remote Switch	3-pin Terminal Block : On, Off, IGN
LED	Power, HDD, PoE	Surge Protection	Up to 80V/1ms Transient Power
SIM Card	2 SIM Card Socket (External)		
Expansion		Others	
Mini PCIe	• 1 supports PCIe/ USB/ External SIM • 1 supports PCIe/ USB/ External SIM/ mSATA	TPM	Optional Infineon SLB9665 supports TPM 2.0, LPC Interface
		Watchdog Timer	Reset : 1 to 255 sec./min. per step
		Smart Management	Wake on LAN, PXE supported
		HW Monitor	Monitoring temperature, voltages. Auto throttling control when CPU overheats
Graphics		Mechanical	
Controller	Intel® HD Graphics 6000	Dimension	257mmx 141mmx 48mm (10.1" x 5.6" x 1.9") (W x L x H)
Interface	• DVI-D : Up to 1920 x 1080 @ 60Hz • DisplayPort 1 : Up to 3840 x 2160 @ 60Hz • DisplayPort 2 : Up to 3840 x 2160 @ 60Hz	Weight	2.1 kg (4.6 lb)
		Mounting	• Wallmount by mounting bracket • DIN Rail Mount
Storage		Environment	
SATA	2 SATA III (6Gbps)	Operating Temp.	-25°C to 70°C (-13°F to 158°F)
mSATA	1 SATA III (Mini PCIe Type, 6Gbps)	Storage Temp.	-40°C to 85°C (-40°F to 185°F)
Storage Device	• 1 CFast Slot, Push-in/ Push-out Ejector • 2 2.5" SSD/ HDD Tray (ECS-4000-PoER, ECS-4000-2R)	Humidity	5% to 95% Humidity, non-condensing
		Relative Humidity	95% @ 70°C
		Shock	• IEC 60068-2-27 • SSD : 50G @ wallmount, Half-sine, 11ms • IEC 60068-2-64
Audio		Vibration	• SSD : 5Grms, 5Hz to 500Hz, 3 Axis
Audio Codec	Realtek ALC892, 5.1 Channel HD Audio	EMC	CE, FCC, EN 50155, EN 50121-3-2
Audio Interface	1 Mic-in, 1 Line-out		
Ethernet			
LAN 1	Intel® I218 Gigabit LAN supports iAMT		
LAN 2	Intel® I210 Gigabit LAN		

Order Information

ECS-4000-PoER650U	• ECS-4000, Intel® Core™ i7-5650U Processor (Broadwell-U), 6 GbE LAN with 4 PoE+, 2 Front-access SSD, 4 COM, 6 USB, Isolated DIO
ECS-4000-PoER350U	• ECS-4000, Intel® Core™ i5-5350U Processor (Broadwell-U), 6 GbE LAN with 4 PoE+, 2 Front-access SSD, 4 COM, 6 USB, Isolated DIO
ECS-4000-PoER010U	• ECS-4000, Intel® Core™ i3-5010U Processor (Broadwell-U), 6 GbE LAN with 4 PoE+, 2 Front-access SSD, 4 COM, 6 USB, Isolated DIO
ECS-4000-PoE650U	• ECS-4000, Intel® Core™ i7-5650U Processor (Broadwell-U), 6 GbE LAN with 4 PoE+, 4 COM, 6 USB, Isolated DIO
ECS-4000-PoE350U	• ECS-4000, Intel® Core™ i5-5350U Processor (Broadwell-U), 6 GbE LAN with 4 PoE+, 4 COM, 6 USB, Isolated DIO
ECS-4000-PoE010U	• ECS-4000, Intel® Core™ i3-5010U Processor (Broadwell-U), 6 GbE LAN with 4 PoE+, 4 COM, 6 USB, Isolated DIO
ECS-4000-2G650U	• ECS-4000, Intel® Core™ i7-5650U Processor (Broadwell-U), 2 GbE LAN, 4 COM, 6 USB, 16 DIO
ECS-4000-2G350U	• ECS-4000, Intel® Core™ i5-5350U Processor (Broadwell-U), 2 GbE LAN, 4 COM, 6 USB, 16 DIO
ECS-4000-2G010U	• ECS-4000, Intel® Core™ i3-5010U Processor (Broadwell-U), 2 GbE LAN, 4 COM, 6 USB, 16 DIO
ECS-4000-2R650U	• ECS-4000, Intel® Core™ i7-5650U Processor (Broadwell-U), 2 GbE LAN, 2 Front-access SSD, 4 COM, 6 USB, 16 DIO
ECS-4000-2R350U	• ECS-4000, Intel® Core™ i5-5350U Processor (Broadwell-U), 2 GbE LAN, 2 Front-access SSD, 4 COM, 6 USB, 16 DIO
ECS-4000-2R010U	• ECS-4000, Intel® Core™ i3-5010U Processor (Broadwell-U), 2 GbE LAN, 2 Front-access SSD, 4 COM, 6 USB, 16 DIO
M340L-W28M1	• Vecow DDR3L 4GB 1333/1066 MHz RAM, Wide Temperature -40°C to +85°C
DDR3L8G	• Certified DDR3L-1600 8G RAM
DDR3L4G	• Certified DDR3L-1600 4G RAM
PWA-120WM4P	• 120W, 24V, 90VAC to 264VAC Power Adaptor with 4-pin Mini-DIN Connector
PWA-120W	• 120W, 24V, 90VAC to 264VAC Power Adapter with 3-pin Terminal Block
PWA-160W-WT	• 160W, 24V, 85VAC to 264VAC Power Adaptor with 3-pin Terminal Block, Wide Temperature -30°C to +70°C
TMBK-20P-100	• Terminal Block 20-pin to SCSI Cable, 100cm
TMBK-20P-500	• Terminal Block 20-pin to SCSI Cable, 500cm
TMB-SCSI-20P	• Terminal Board with One 20-pin SCSI Connector and DIN-Rail Mounting

ECS-4000-20151118